

# Brno Metropolitan Area: Mobility

Soňa Raszková,

Brno City Municipality

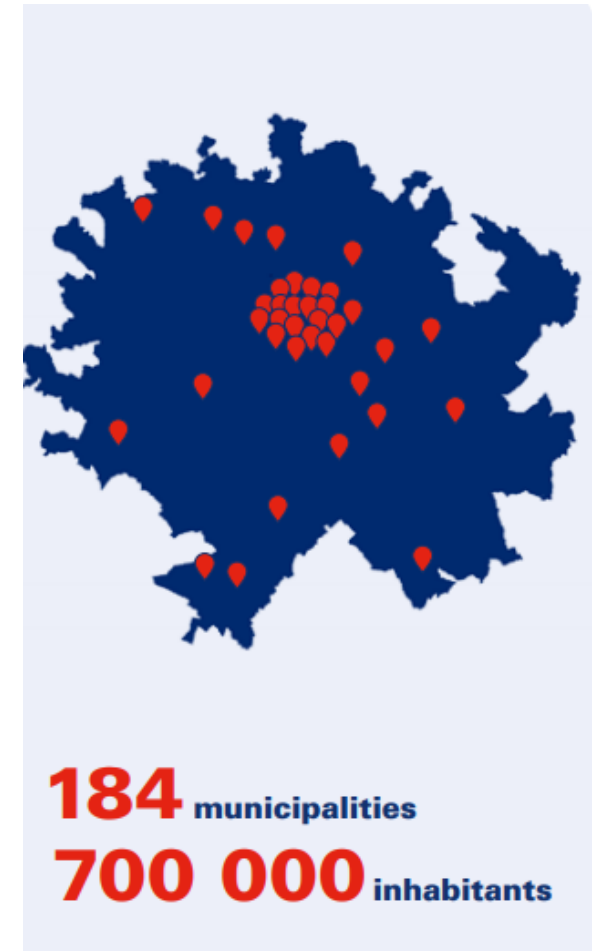
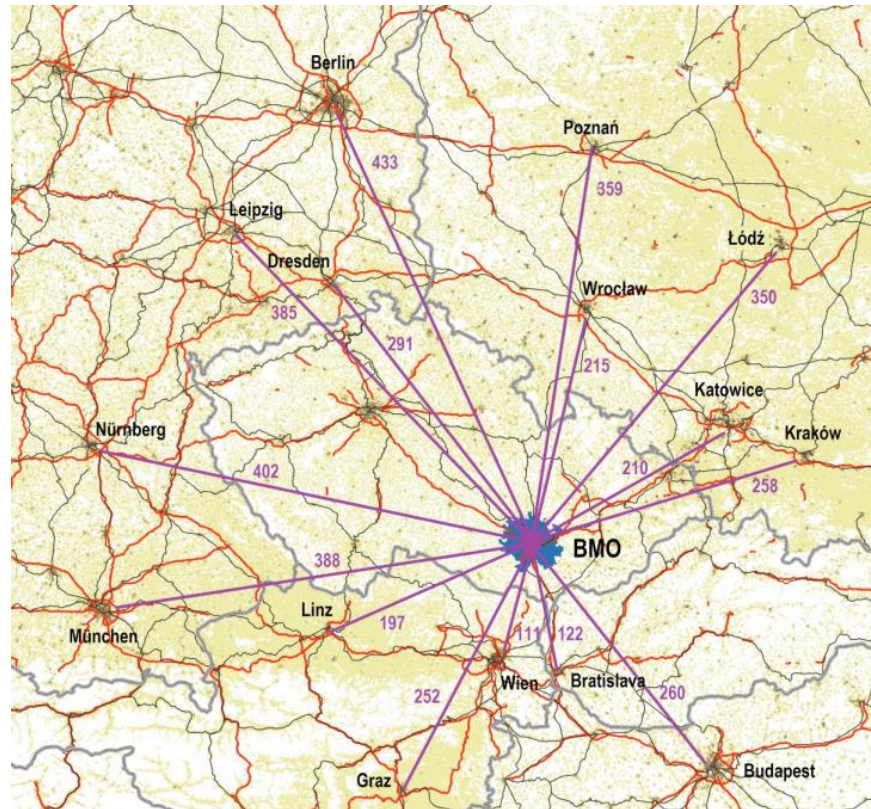
World Urban Forum

27.6.2022

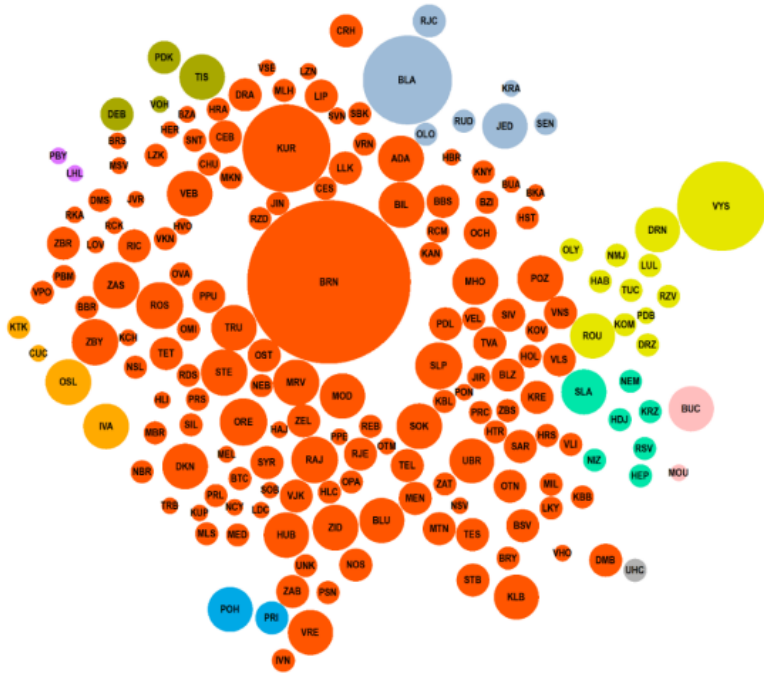


# Brno Metropolitan Area

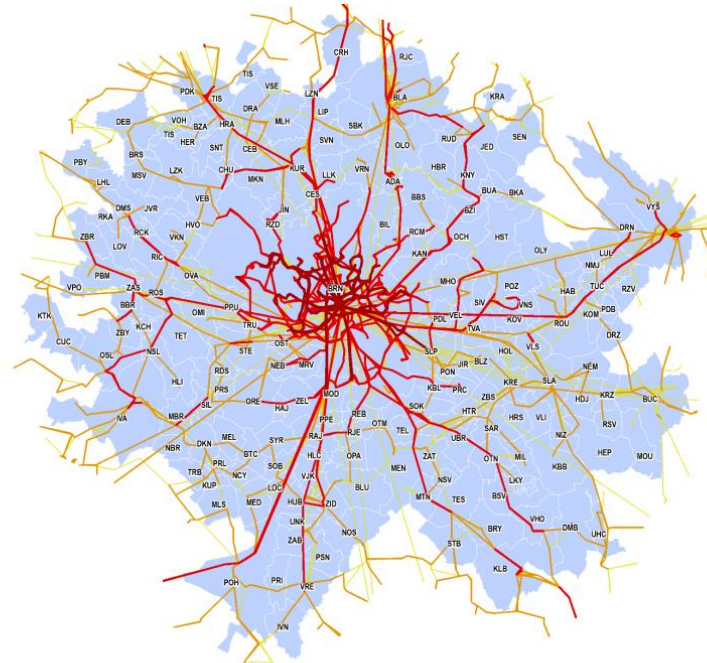
- No formal establishment
- Delimitation: for the purpose of ITI (FUA=MA)
- Integrated strategy 2014-2020 (metropolitan projects)



# Mobility

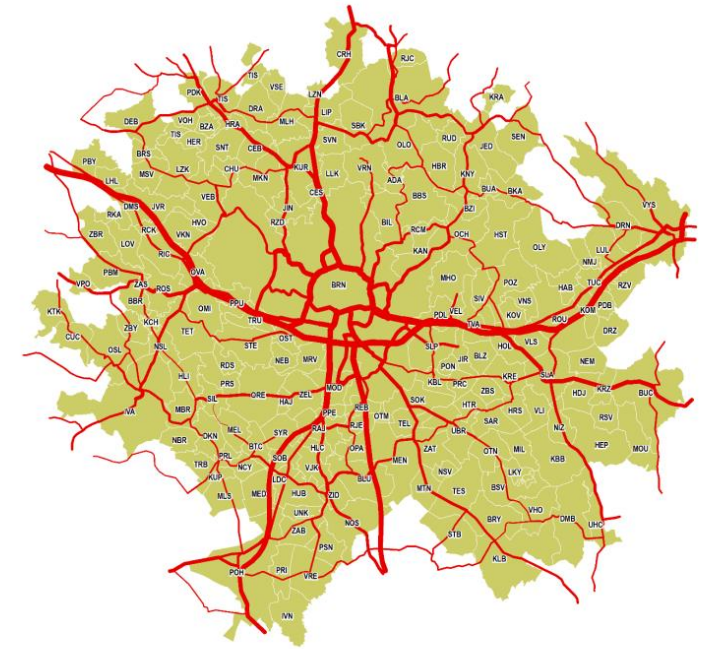


Commuting to work



do 10 | 11-25 | 26-100 | 101-150 | nad 150 spoju denně

Public transport connection in one working day



do 500 | 501-1 000 | 1 001-3 000 | 3 001-5 000 | 5 001-10 000 | 10 001-15 000 | 15 001-20 000  
20 001-30 000 | 30 001-40 000 | nad 40 000

Daily traffic volumes on the selected road network on working day

# Why urban-rural level = metropolitan level?

Territorial concentration of traffic



Optimal intermediate space



Knowledge of the actors



Easier communication and decision-making



**Effectiveness!**

# Integrated approach

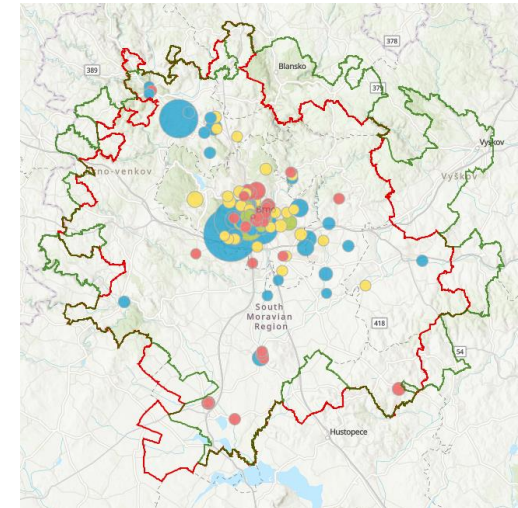
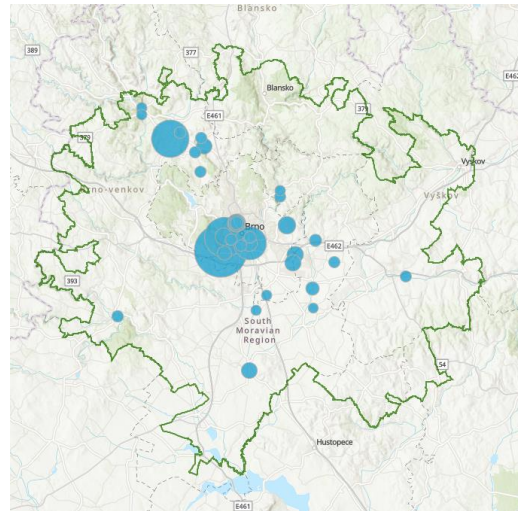
- Impact on key strategic projects mainly with agglomeration impact;
- Common coordinated approach of engagement the stakeholders of the territory based on the partnership principle;
- 123 projects (1/3 outside Brno);
- Acceleration of the development of secondary centres in BMA;
- Avoid duplicities in the territory, to connect intentions and information from territory.



# Integrated solutions: mobility



New district Trnitá - transport and technical infrastructure  
(modernization of the bus station Zvonařka, tram Plotní,  
replacement of steam pipelines for hot water pipelines)



36 projects  
(80 mil EUR)

Transfer  
terminal in  
Židlochovice



A network of cycle paths in  
the Šlapanice region



New tram line –  
the biggest investment in public transport in Brno in the  
last 20 years

# Integrated strategy 21+: strategic approach

- Approved by city assembly on 17th May

## Topics:

Metropolitan sustainable mobility

Global Accessibility of BMA

## Goals:

- Develop and promote a functional and sustainable transport system based on high quality and attractive public transport
- Reduce negative impacts from transport (noise, emissions, intensity, congestion, safety hazards)
- Improve global connectivity of BMO to other domestic and European metropolitan areas



# Integrated strategy 21+: implementation

- 14 integrated solutions
  - T1A01 Extension of tram line Bystrc – Kamechy
  - T1A02 Extension of tram line Merhautova - Lesná (connection Halasovo nám.)
  - T1A03 Re-opening of the tram line Stránská skála-Líšeň, Holzova
  - T2A04 Transport solution for Pisárky-Bohunice
  - T3A05 Construction of a network of terminals and P+R car parks in BMO
  - T1A06 System for the development of city logistics
  - T2A07 Integrated cycle path system in BMO
  - T1A08 Low emission vehicles for public transport in BMO
  - T2A09 Terminal Starý Lískovec
  - T2A10 Transport solutions to divert traffic away from populated areas in BMO
  - T2A11 Modernisation of the accompanying public transport infrastructure
  - T3A12 Development of transport telematics in BMO
  - T2A13 Development of clearance systems for public transport
  - T1B01 Development of Brno Airport

**230 mil EUR**

**- OPD, IROP**







# Thank you for your attention

[raszkovalsona@brno.cz](mailto:raszkovalsona@brno.cz)

[metropolitni.brno.cz/en](http://metropolitni.brno.cz/en)